



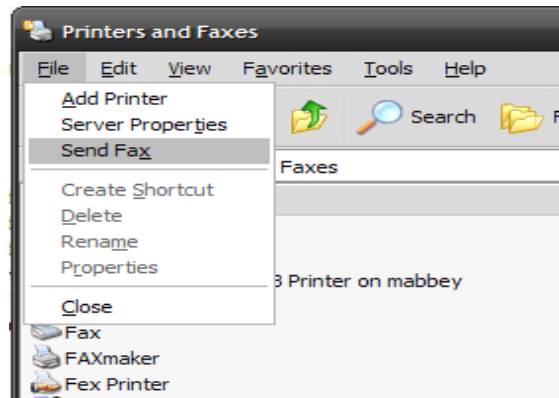
## Dot Matrix Printer Setup Instructions

**NOTE:** The Finance Express dot-matrix printer interface has been written to match the Okidata Microline 320/321 Turbo print capabilities; therefore we can only guarantee functionality on this printer model. However, because a generic driver is utilized in the printer set up, it is possible to configure other printer brands, such as the Epson LQ 570, to work as well. But Finance Express does not guarantee that once configured, that printing on these "other" printer brands will work with 100% satisfaction.

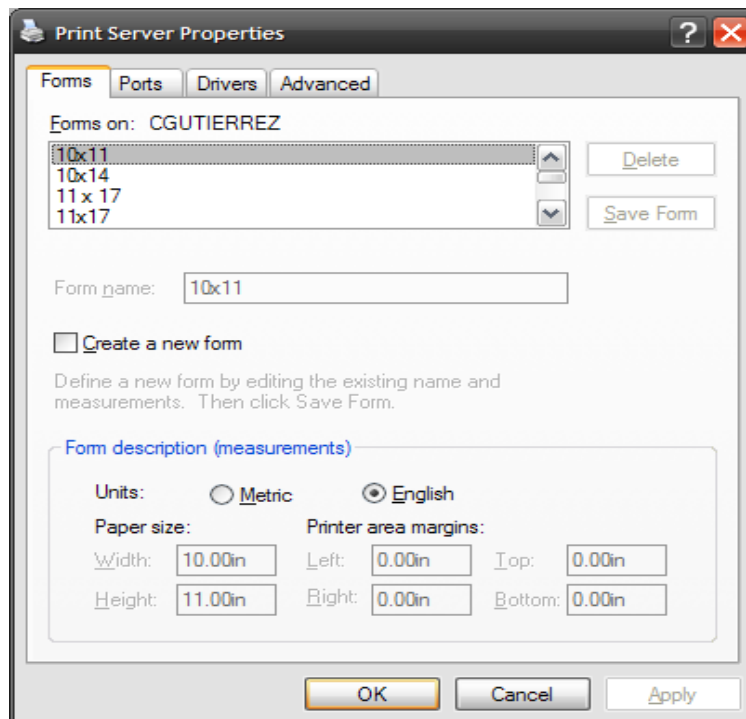
### Before we begin, be sure that:

- You are working on the pc that is physically connected to the dot matrix printer needing to be configured.
- Your dot matrix printer is already installed on your pc and is listed in your list of printers on your Printers and Faxes window.

- 1) Select **Start > Printers and Faxes**
- 2) Click **File**, then **Server Properties**.

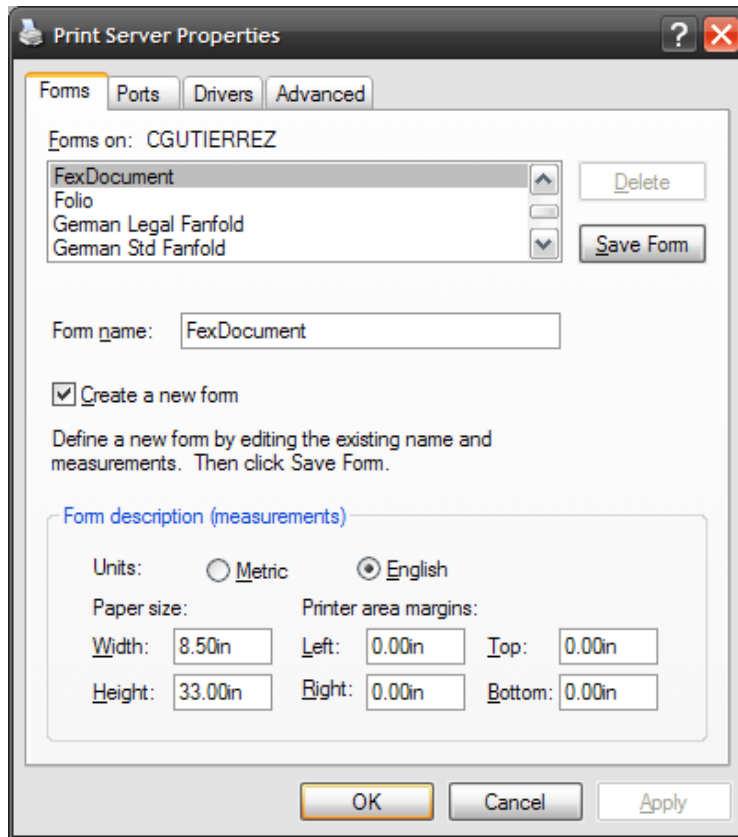


- 3) You should see a Print Server Properties window similar to this.



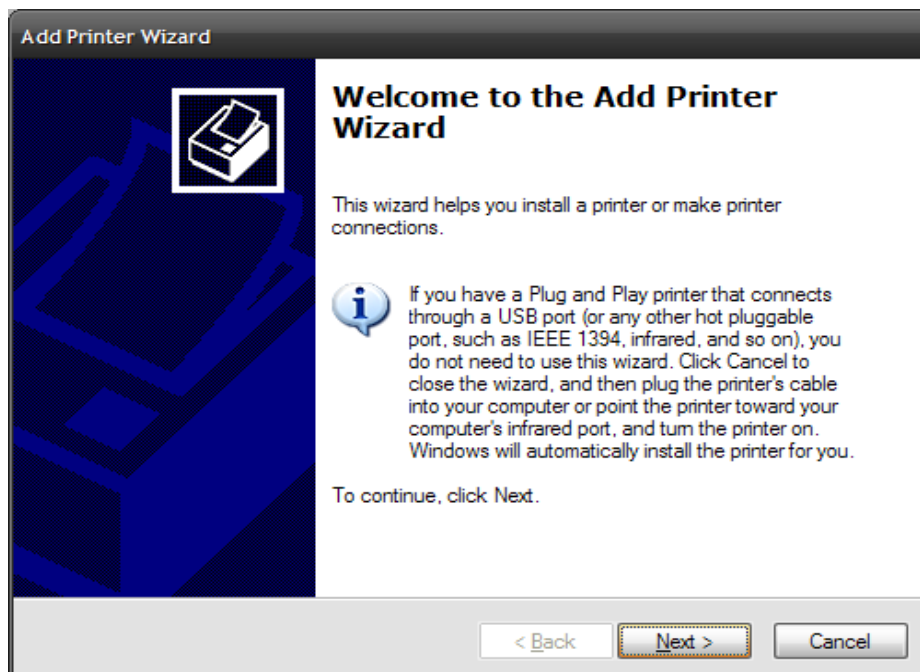
- 4) Next, click the **Create a new form** checkbox and supply the following values for the new FEX form template:

Form Name: **FexDocument**  
Width: **8.50in** Height: **33.00in**  
Left, Right, Top, Bottom Margins: **0.00in**

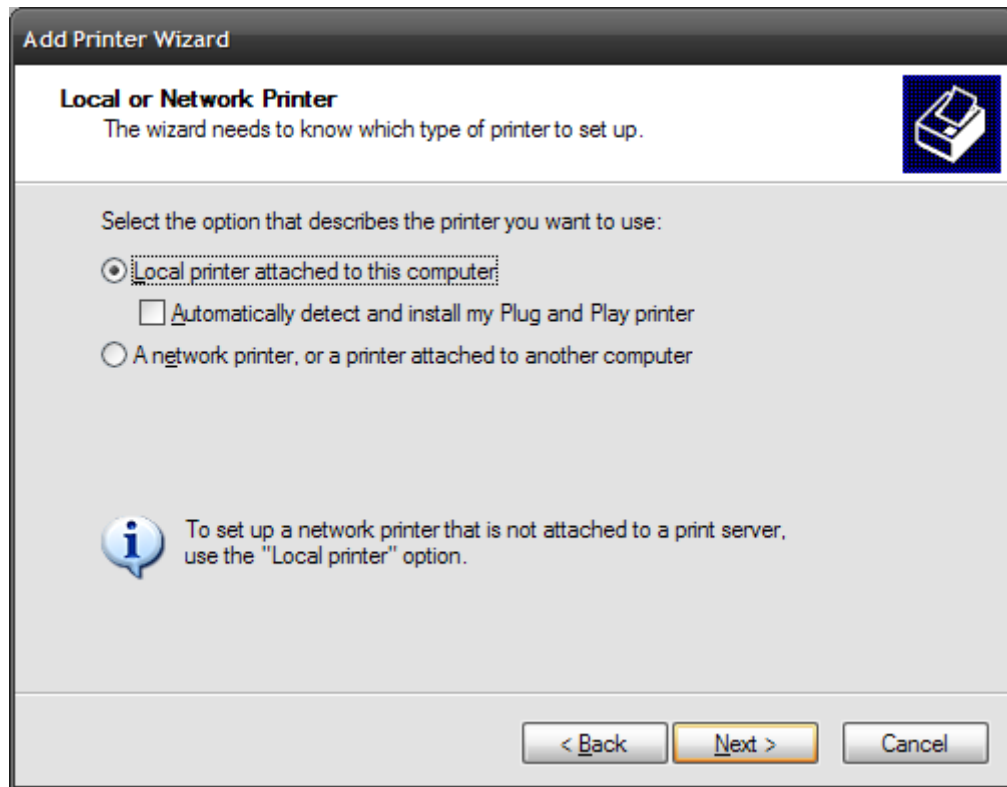


Next, click **OK** to save and close the Server Properties window.

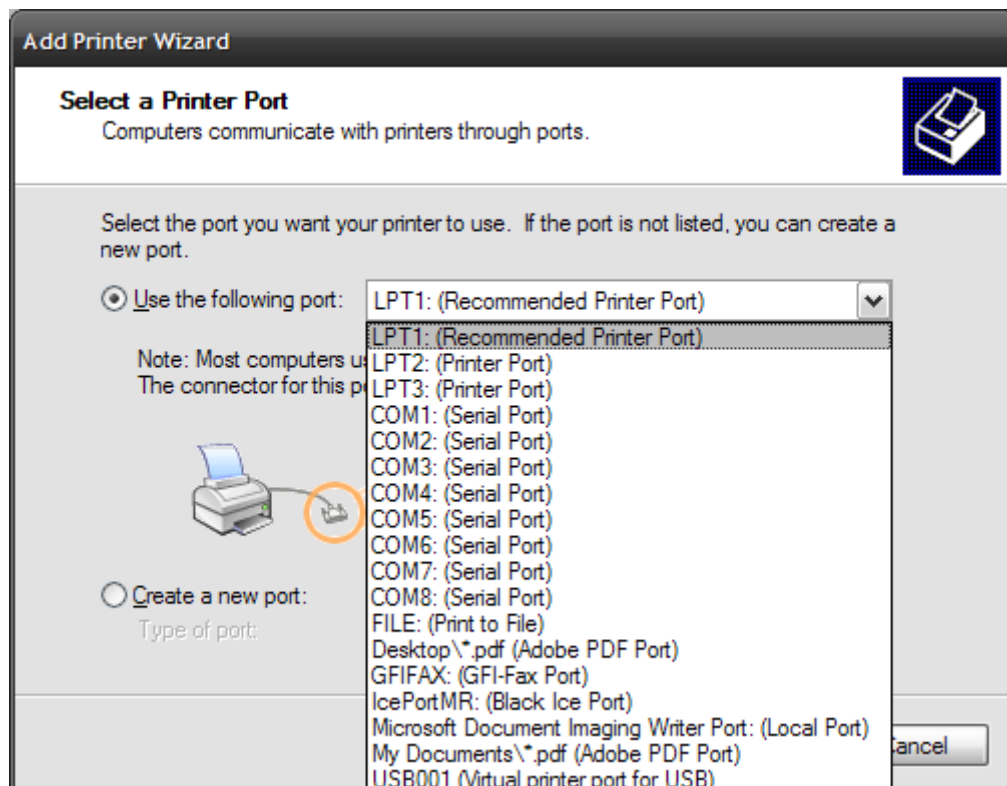
- 5) Unless you closed the window, your Printers window should still be visible. From this window, double click the icon labeled **Add Printer** and you should be presented with the first screen of the Add Printer Wizard. Click **Next >**.



- 6) Since this is a local printer, make sure you select **Local printer attached to this computer**. Ensure that the **Automatically detect and install my Plug and Play printer** is NOT checked. Click **Next >** to continue.

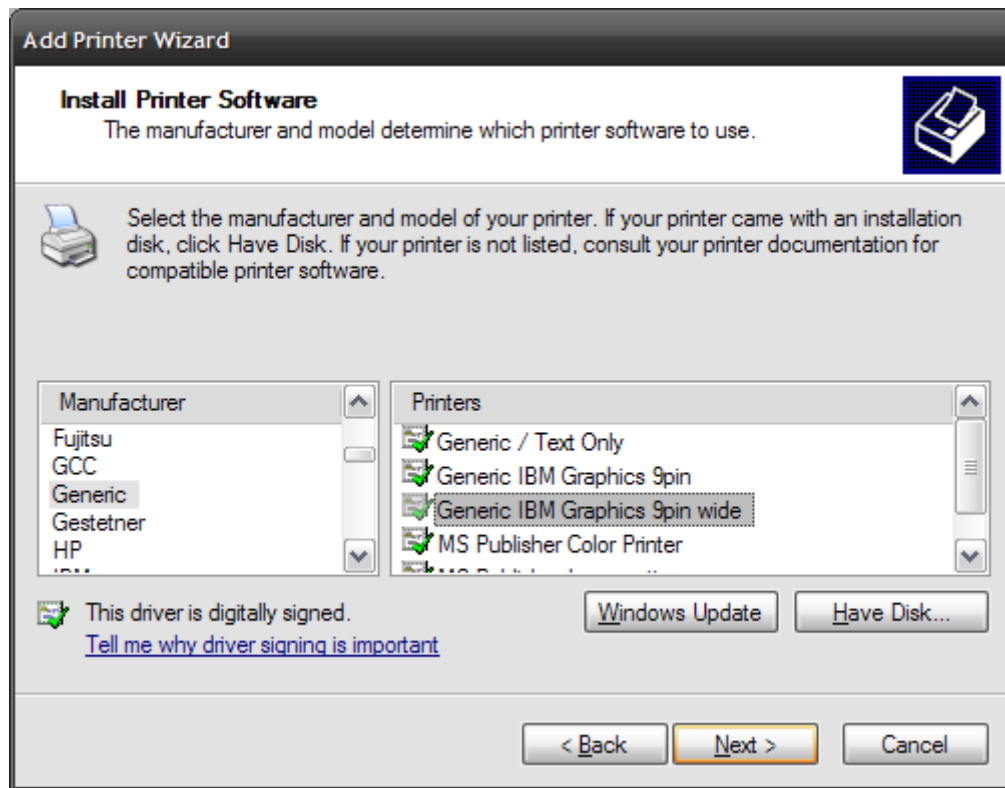


- 7) Select the connection port used to connect your printer to your pc. This is typically **LPT1** but **USB** is also commonly used. Click **Next >** to continue.

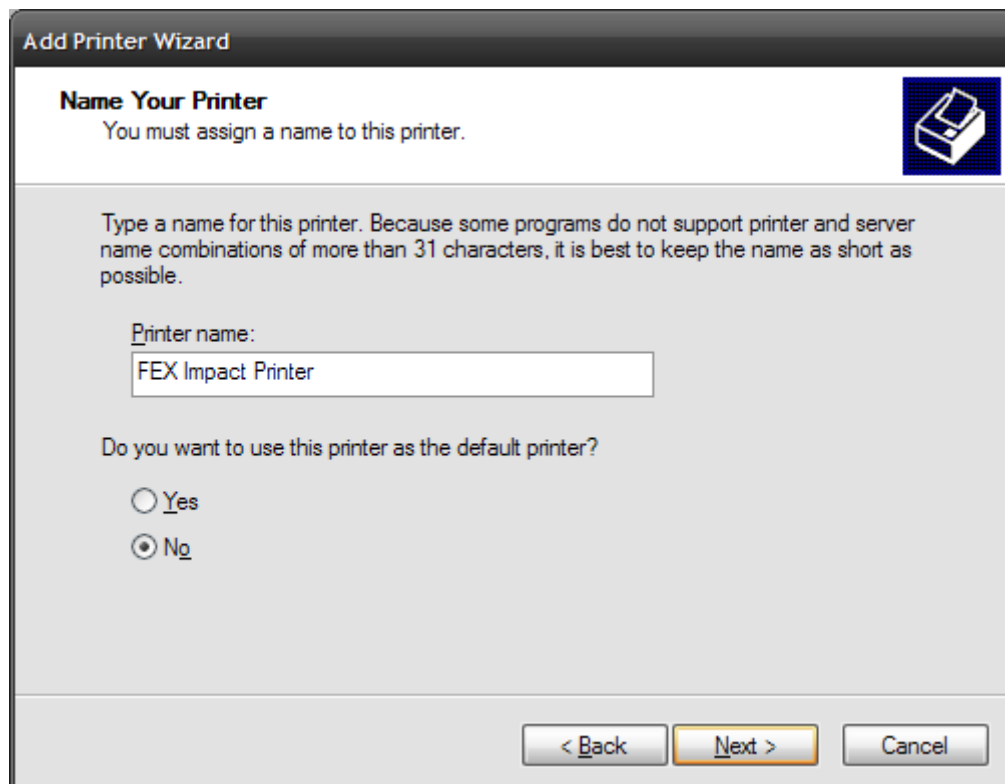


- 8) Next, you will select the Manufacturer and Printer driver to use.  
Choose the following: **Manufacturer: Generic**  
**Printer: Generic IBM Graphics 9pin wide**

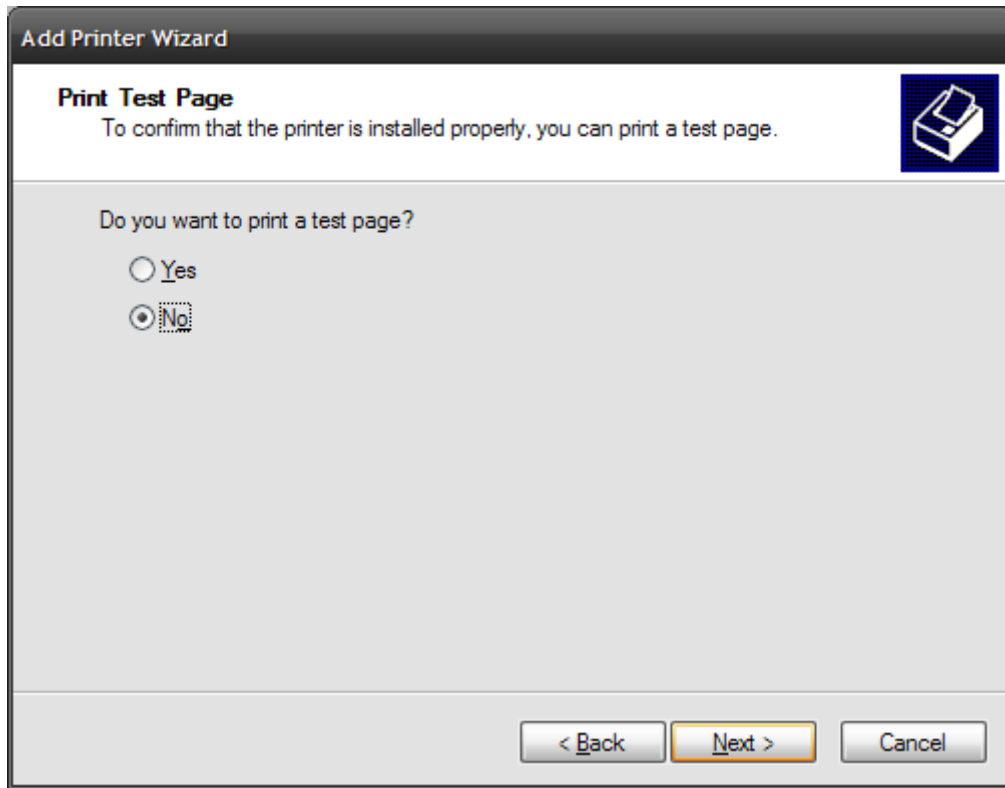
Click **Next >** to continue.



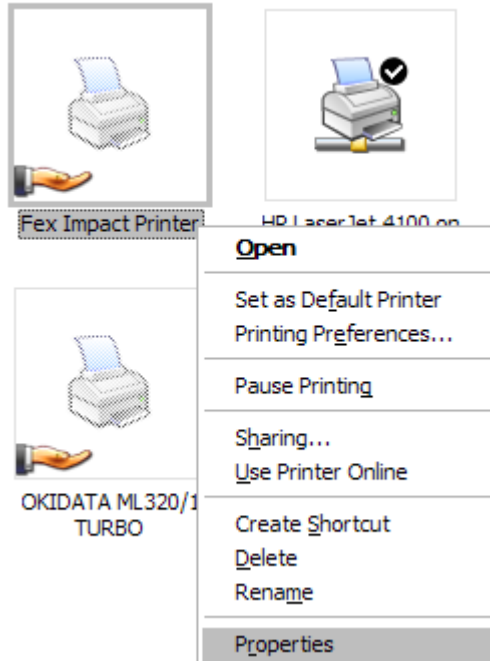
- 9) Assign the new printer a name. You can call it whatever you like, but we named our example **FEX Impact Printer**. Click **Next >** to continue.



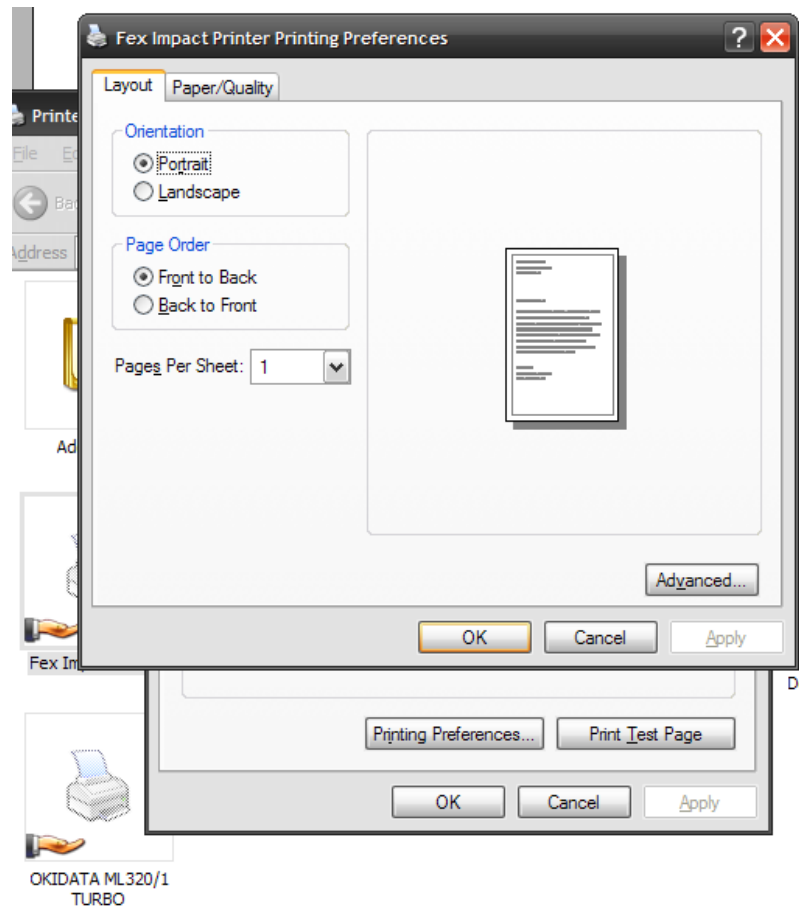
10) Finally, you can print a test page to the printer, however, it's not required. Click **Next >** to continue. At this point, you should have a new printer selection in your Printers listing.



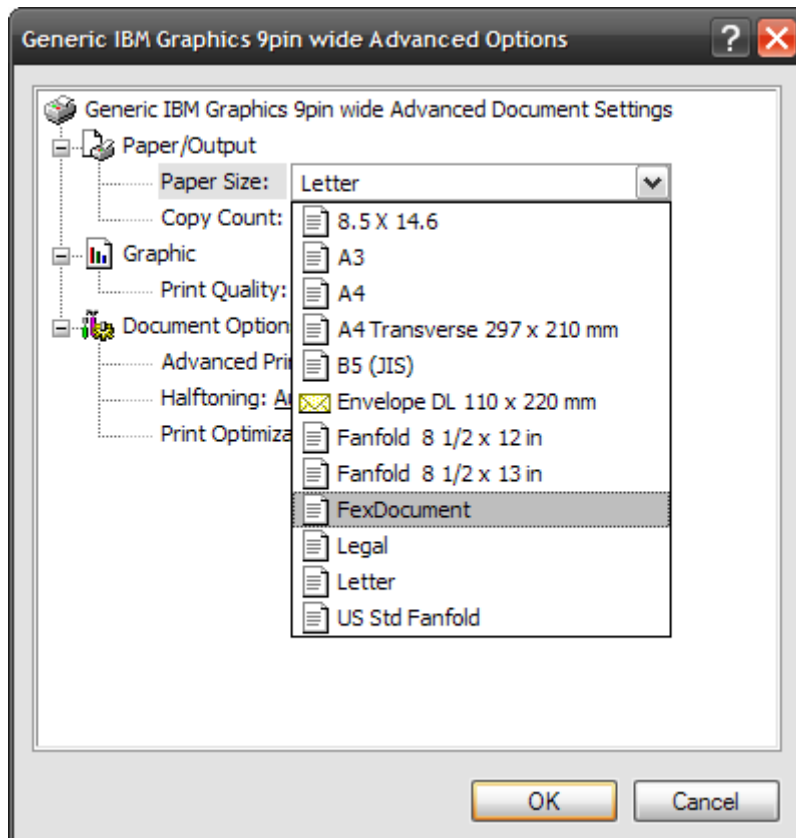
11) Next, you will need to modify the printer that you just setup. Right click on the printer and then choose **Properties** from the menu.



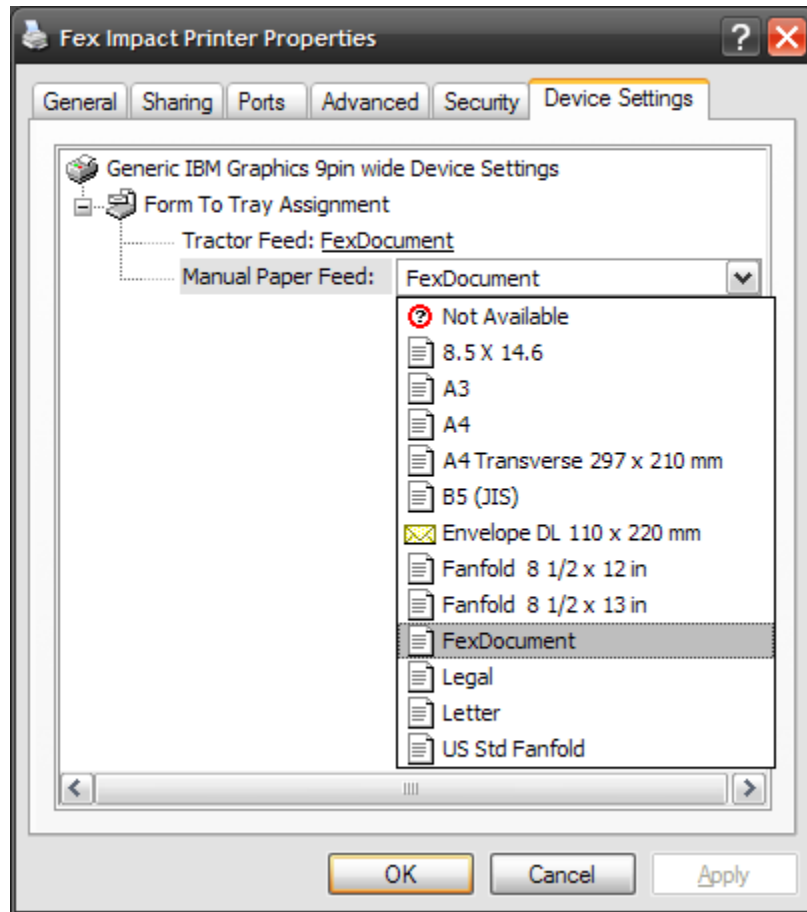
12) Next, click on the **Printing Preferences** button and this will open up the **Printer Preferences** window.



13) Next, click on the **Advanced** button. Within this area, dropdown the **Paper size** and choose **FEX Form**. Click **OK** to return to the main Properties page. **Note:** you can also change the **Print Quality** from this screen if the print results need to be adjusted.



14) Next, click on the **Device Settings** tab at the top. On this screen, select **FEX Form** as the **Tractor Feed** and **Manual Paper Feed** selections. Finally, click **OK** to save the settings.



Once these steps have been followed, you should now be able to print dot matrix forms on your dot matrix printer!!!

\*Also, please note that these instructions are only for the printer setup. These instructions must be followed exactly by all persons wishing to print dot matrix forms from within FEX, even if that dealer has already set up his/her printer previously using the Okidata disc and driver files to install the printer.

**OKIDATA**

**INTERNAL**

**SETTINGS**

Printer Control

Font  
Font  
Font  
Font  
Font  
Font

Symbol Sets  
Symbol Sets  
Symbol Sets  
Symbol Sets

Rear Feed  
Rear Feed  
Rear Feed  
Rear Feed

Bottom Feed  
Bottom Feed  
Bottom Feed  
Bottom Feed

Top Feed  
Top Feed  
Top Feed  
Top Feed  
Top Feed

Set-Up  
Set-Up  
Set-Up  
Set-Up  
|||||  
Set-Up  
Set-Up  
Set-Up  
Set-Up  
Set-Up  
Set-Up  
Set-Up  
Set-Up  
Set-Up  
Set-Up  
Set-Up  
Set-Up  
Set-Up  
Set-Up

Parallel I/F  
Parallel I/F  
Parallel I/F

Emulation Mode

Print Mode  
DRAFT Mode  
Pitch  
Proportional Spacing  
Style  
Size

Character Set  
Language Set  
Zero Character  
Code Page

Line Spacing  
Form Tear-Off  
Skip Over Perforation  
Page Length

Line Spacing  
Form Tear-Off  
Skip Over Perforation  
Page Length

Line Spacing  
Bottom Margin  
Page Length  
Wait Time  
Page Length Control

Graphics  
Receive Buffer Size  
Paper Out Override  
Print Registration  
||||| ←----SET |||||  
Operator Panel Function  
Reset Inhibit  
Print Suppress Effective  
Auto LF  
Auto CR  
SI Select Pitch (10CPI)  
SI Select Pitch (12CPI)  
Time Out Print  
Auto Select  
Centering Position  
ESC SI Pitch

I-Prime  
Pin 18  
Bi-Direction

IBM PPR

Utility  
HSD  
10 CPI  
No  
Normal  
Single

Set I  
American  
Slashed  
USA

6 LPI  
500ms  
No  
11"

6 LPI  
Off  
No  
11"

6 LPI  
Invalid  
11"  
1 sec  
by Actual Page Length

Bi-directional  
64K  
Yes  
0  
SHIFT SET → |||||  
Full Operation  
No  
No  
No  
No  
17.1 CPI  
12 CPI  
Valid  
Yes  
DEFAULT  
17.1 CPI

Buffer Print  
Open  
Enable